

# World Climate Research Programme Director's Report

David Carlson  
Director, WCRP

Staff

Activities

Funding & Budgets

Staff *Talent, energy, collective impact?*

Activities *Urgency, diversity, equity, messages?*

Funding & Budgets *Issues, partners, possibilities?*

*Dave's observations & questions* 

# WCRP Organization

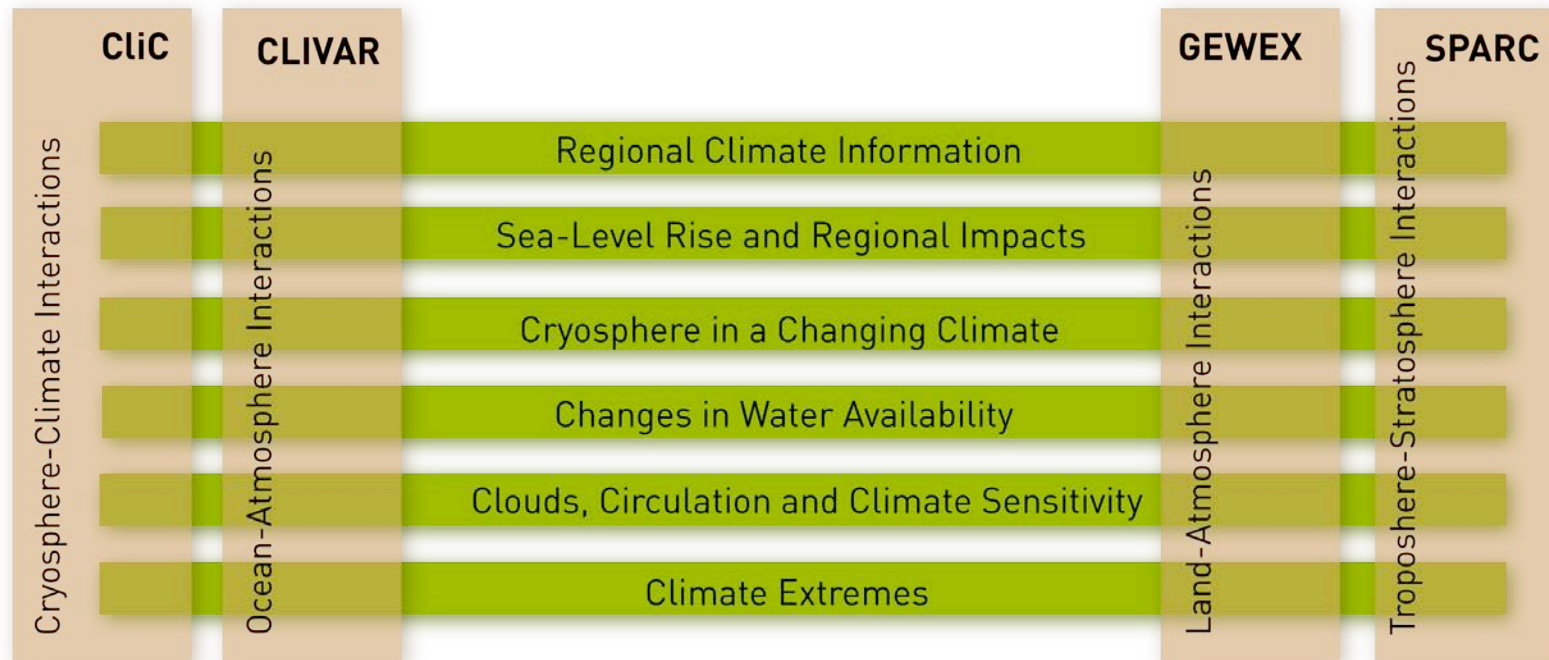
Joint Scientific Committee

Joint Planning Staff

Modeling Advisory Council

Data Advisory Council

**Working Groups on:** Coupled Modelling (WGCM), Regional Climate (WGRC), Seasonal to Interannual Prediction (WGSIP), Numerical Experimentation (WGNE)

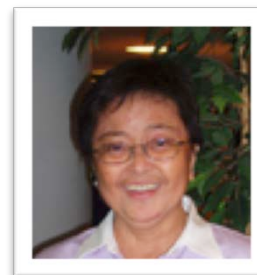




**David Carlson**  
*Director*



**Michel Rixen**  
*Sr Scientific Officer*



**Teresa Alcober**  
*Administrative Assistant*



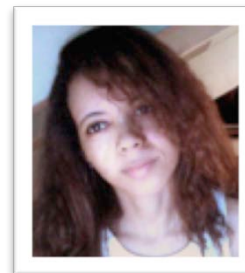
**Anne Chautard**  
*Administrative Assistant*



**Vladimir Ryabinin**  
*Sr Scientific Officer*



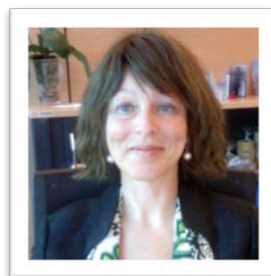
*Sr Scientific Officer*



**Isabel Hall**  
*Secretary*



**Catherine Michaut**  
*Support (Paris)*



**Roberta Boscolo**  
*Communication/Scientific Officer*



**Jenny Baeseman**  
*Director*



**Greg Flato**  
*SSG Co-Chair*



**Gerhard Krinner**  
*SSG Co-Chair*



**Heidi Isaksen**  
*Administrative Officer*



**Vladimir Ryabinin**  
*JPS Liaison*



**V. Detemmerman**  
*Director*



**Anna Pirani**  
*Deputy Director*



**Detlef Stammer**  
*SSG Co-Chair*



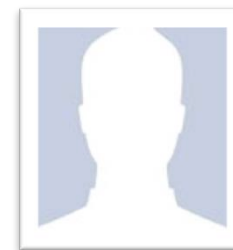
**Lisa Goddard**  
*SSG Co-Chair*



**Nico Catalbiano**  
*Science Officer*



**Carlos Ereno**  
*Science Officer*

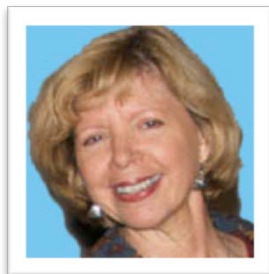


*JPS Liaison*

Hosted in China and India!



**Peter van Oevelen**  
*Director*



**Dawn P. Erlich**  
*Assistant to Director*



**Sonia Seneviratne**  
*SSG Chair*



**Graeme Stephens**  
*SSG Vice-Chair*



**Sam Benedict**  
*Sr. Science Officer*



**Shannon Macken**  
*Administrative Support*



*JPS Liaison*





**Johannes Staehelin**  
*Director*



**Carolin Arndt**  
*Science Officer*



**Joan Alexander**  
*SSG Co-Chair*



**Ted Shepherd**  
*SSG Co-Chair*



**Fiona Tummon**  
*Science Officer*



**Diane Pendlebury**  
*Project Scientist*



**Anke Witten**  
*Office Manager*



**Vladimir Ryabinin**  
*JPS Liaison*



**GEWEX IC 2014**  
The Hague

**CS 2014**  
Darmstadt

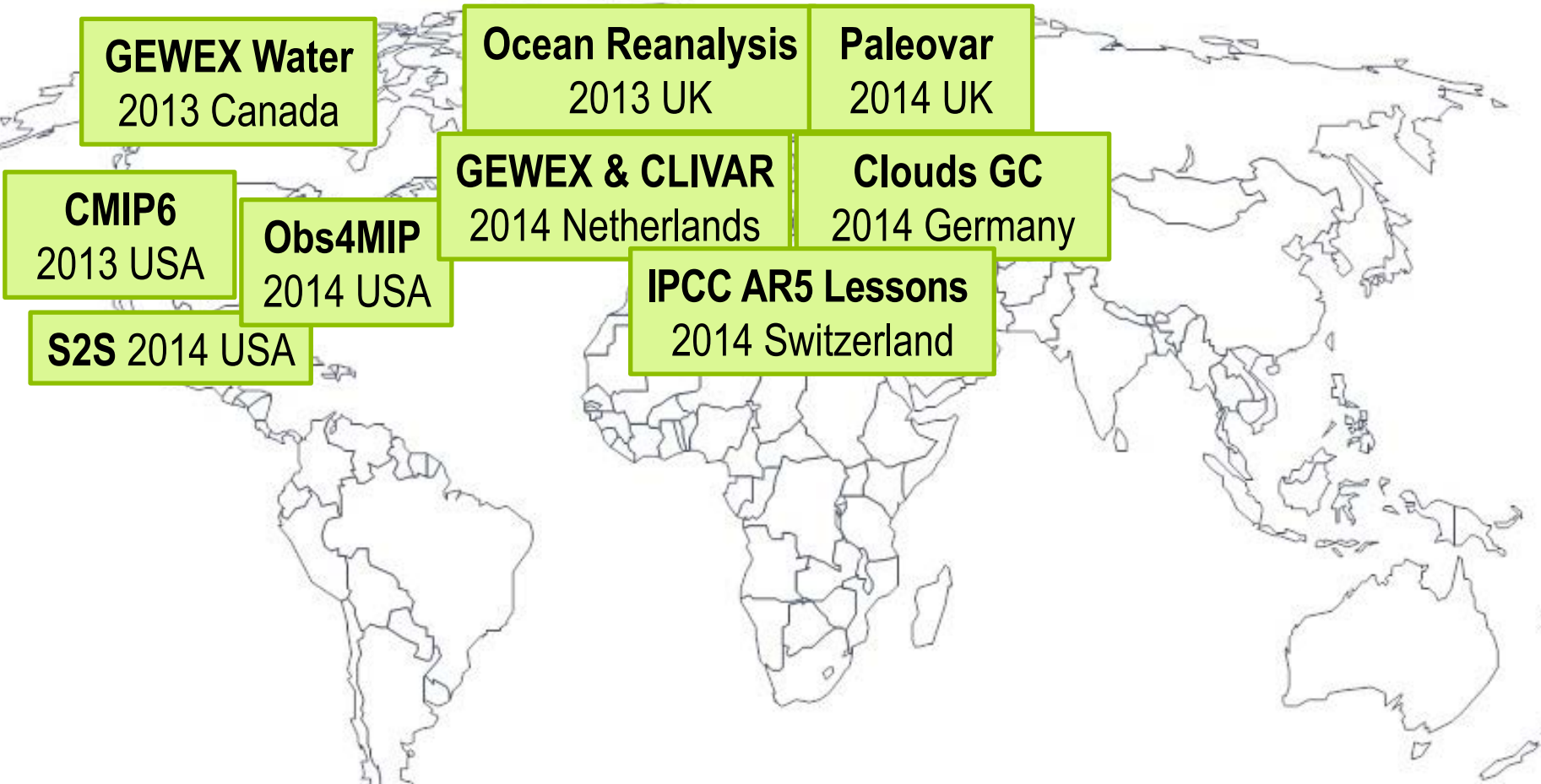
**CORDEX**  
2013 Brussels

**ACC 2013**  
Arusha

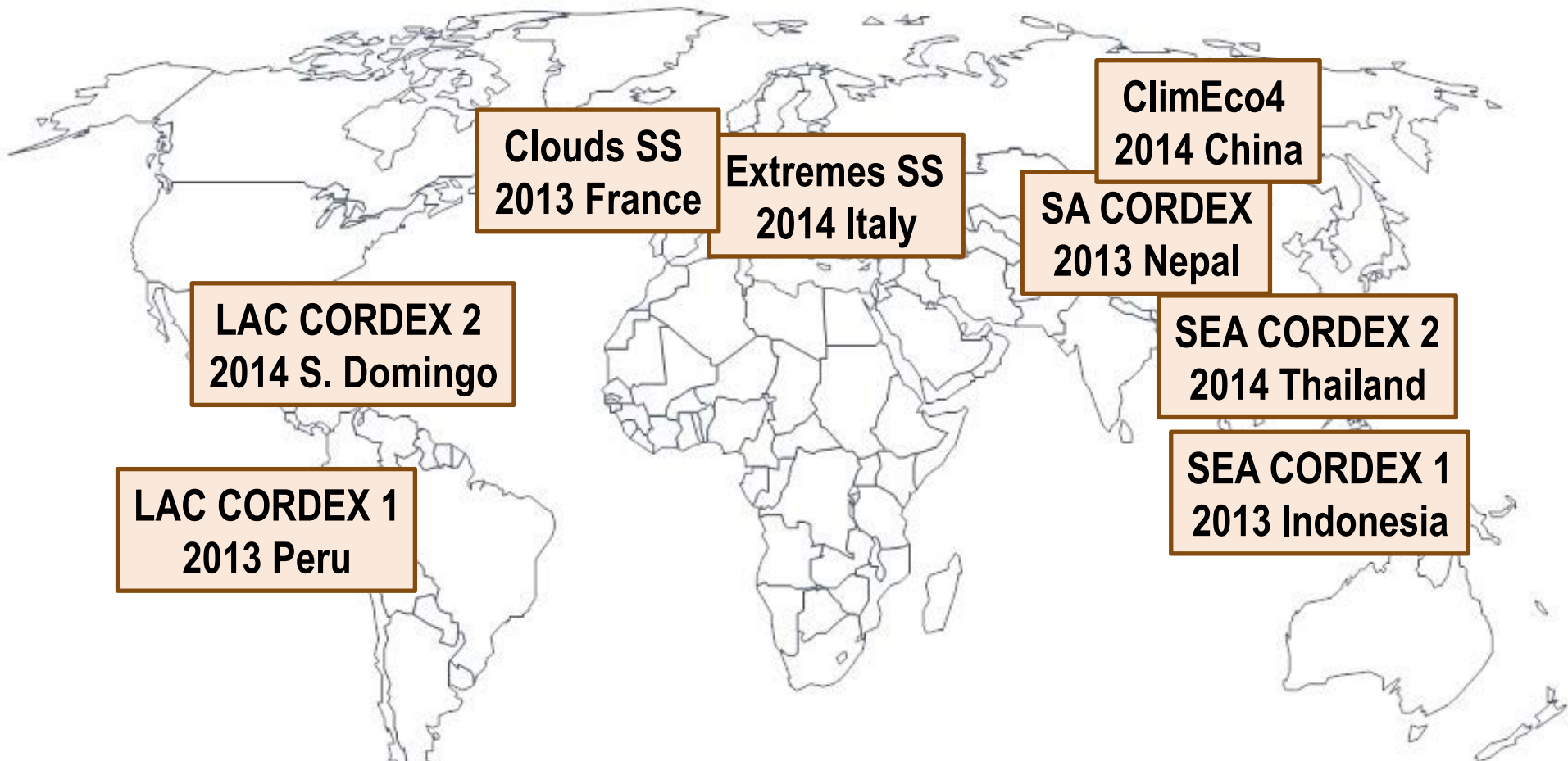
**LACC 2014**  
Montevideo

**SPARC GA**  
Queenstown 2014

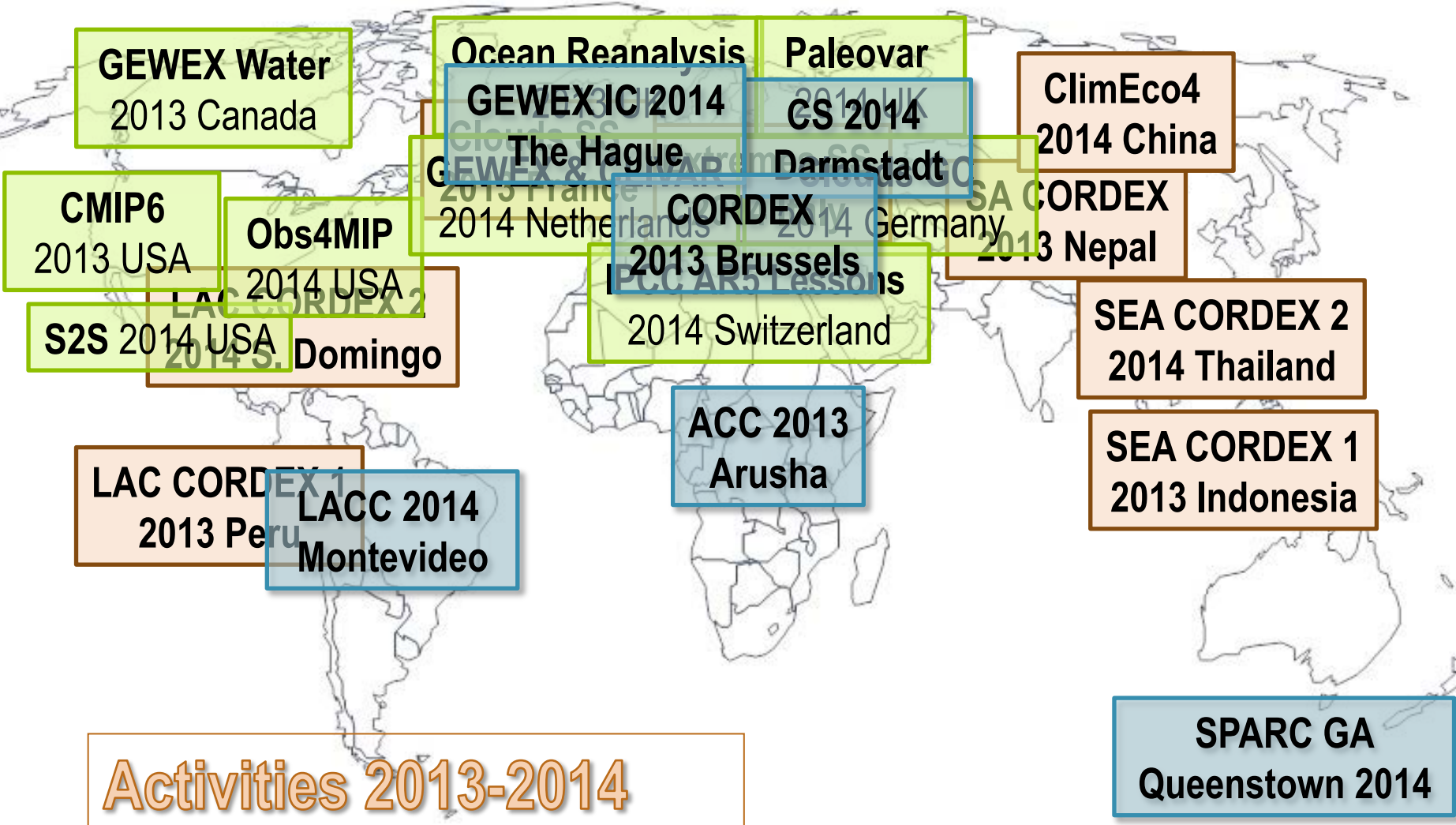
## Major Conferences 2013-2014



## Major Workshops 2013-2014



## Training Activities 2013-2014



## JCRF FUNDS AVAILABLE 2012-2014 (CHF)

	2012	2013	2014 est
BALANCE BROUGHT FORWARD	1,662,000	1,600,000	1,200,000
WMO	1,863,000	1,824,000	1,824,000
ICSU	525,000	315,000	690,000
IOC	20,000	65,000	56,000
TOTAL INCOME	2,408,000	2,204,000	2,570,000
<b>TOTAL FUNDS AVAILABLE</b>	<b>4,070,000</b>	<b>3,804,000</b>	<b>3,770,000</b>

## JCRF EXPENDITURES 2012-2014 (CHF)

	2012	2013	2014 est
<b>SALARIES AND RELATED COSTS</b>	1,731,500	1,603,000	1,422,000
<b>OPERATING EXPENSES</b>	131,500	101,000	110,000
<b>MEETING SUPPORT</b>	807,000	1,142,000	930,000
<b>TOTAL EXPENDITURES</b>	<b>2,670,000</b>	<b>2,846,000</b>	<b>2,462,000</b>

## Project Offices Sponsors and Budgets 2012-2014 (USD)

		2012	2013	2014 est
<b>GEWEX</b>	USA	675,000	675,000	675,000
<b>CLIVAR</b>	UK	300,000	300,000	50,000
	USA	187,000	187,300	140,000
	China			175,000
	India			4 staff as of 1 June '14
	<b>ICPO Total</b>	487,000	487,300	365,000
<b>SPARC</b>	WCRP	21,000	22,300	22,300
	Switzerland	405,000	434,000	434,000
	Canada	127,000	100,000	
	<b>SPARC IPO Total</b>	553,000	556,300	456,300
<b>CLiC</b>	Norway	246,000	237,000	329,000
<b>Paris</b>	France	152,000	152,000	152,000
<b>TOTAL</b>		<b>2,113,000</b>	<b>2,061,300</b>	<b>1,977,300</b>



## National Contributions and Proposals (USD)

2012	2013	2014 est
612,000	445,000	830,000

## FUNDING PRIORITIES – 2014

Programme/Activity	Allocated	Spent
Grand Challenges	134	23
Modeling & Observations	162	102
Regional Climate	101	31
CliC	120	66
CLIVAR	140	112
GEWEX	170	115
SPARC	131	66

Staff      *Talent, energy, collective impact?*

Activities      *Urgency, diversity, equity, messages?*

Funding & Budgets      *Issues, partners, possibilities?*

*Initial and preliminary!!!* 

## PROJECT FUNDING PRIORITIES – CIIC 2014

CIIC	meeting	location	date	Support allocated (used) (CHF)
	CiIC SSG-10	Geneva	2014 Feb	(22,000)
	DUE permafrost (LoA)	Frascati, Italy	2014 Feb	(10,000)
	ASPECT (LoA)	Hobart, Australia	2014 March	(10,000)
	Cryospheric linkages, sea-ice, IGS Symposium (LoA)	Hobart, Australia	2014 March	(10,000)
	THAW (thermokarst) Workshop	Quebec, Canada	2014 March	(3,700)
	PYRN Model training Workshop (LoA)	Evora, Portugal	2014 June	10,000
	Ice Sheet System Modelling Training Workshop (LoA)	Bergen Norway	2014 June	6,000
	Polar (arctic) CORDEX	Lund, Sweden	2014 June	4,000
	Arctic Subsea Permafrost	Ottawa, Canada	2014 June	2,000
	ESM-IceSheetMIP (LoA)	Greenbelt, MD, USA	2014 July	7,000
	ESA CCI sea-ice ECV (LoA)	Hamburg, Germany	2014 Sept	6,200
	CORDEX AACA for AMAP	TBD		5,000
	WAIS and Ocean Coupled Modelling	Abu Dhabi	2014 Oct	10,000
	Permafrost Research Priorities	San Francisco, CA, USA	2014 Dec	2,500
	Southern Ocean Panel	TBD	TBD	
	Greenland Ice Sheet (US CLIVAR but for CiIC)	TBD	TBD	2,000
CIPO staff and individual travel				(10,000)
subtotals				54,700 (65,700)

## PROJECT FUNDING PRIORITIES – CLIVAR 2014

CLIVAR	meeting	location	date	support level allocated (used) (CHF)
	LAC Conference (50%)	Montevideo, Uruguay	2014 March	(23,000)
	WGOMD workshop and meeting	Kiel, Germany	2014 April	(9,000)
	LATSIS Symposium	Zurich, Switzerland	2014 June	(2,000)
	pan-CLIVAR meeting	The Hague, Netherlands	2014 July	(65,000)
	Climeco summer school w/IMBER	Shanghai, China	2014 Aug	(4,500)
	CLIVAR SSG-21	Moscow, Russia		20,000
	Drought workshop	Pasadena, CA, USA	2014 Dec	7,500
ICPO staff travel and individual travel to participants				(9,000)
subtotals				27,500 (112,500)

# PROJECT FUNDING PRIORITIES – GEWEX 2014

<b>GEWEX</b>	<b>meeting</b>	<b>location</b>	<b>date</b>	<b>support level allocated (used) (CHF)</b>
	LAC Conference (50%)	Montevideo, Uruguay	2014 March	(23,000)
	7th International GEWEX Conference and related meetings (LoA)	The Hague, Netherlands	2014 July	(85,000)
	BSRN-13 (shared with GCOS)	Bologna, Italy	2014 Sept	15,000
	Grey Zone meeting	TBD		2,500
	First Precipitation Assessment meeting	TBD		2,500
	4th Water Vapour Assessment meeting	TBD		2,500
	Finalization of the Integrated Product meeting	USA		2,500
	GDAP meeting	China (TBC)		3,000
	GHP Panel meeting	Pasadena, CA, USA	2014 Dec	20,000
	Drought workshop	Pasadena CA	2014 Dec	7,500
IGPO staff travel and individual travel				(7,000)
<b>subtotals</b>				<b>55,500 (115,000)</b>

# PROJECT FUNDING PRIORITIES – SPARC 2014

SPARC	meeting	location	date	support level allocated (used) (CHF)
	SPARC GA 2014 (partially on 2013 budget: 31,500)	Queenstown, New Zealand	2014 Jan	(20,900)
	SPARC SSG-21 (on 2013 budget: 34,700)	Queenstown, New Zealand	2014 March	
	Gravity Waves	Bern, Switzerland	2014 March	(6,000)
	HEPPA + SOLARIS	Baden Baden, Germany	2014 May	(7,500)
	IGAC/SPARC CCMI meeting	Lancaster, UK	2014 May	(8,700)
	Latsis Symposium	Zurich, Switzerland	2014 June	3,000
	SPARC Data Assimilation workshop	Camp Spring, MD, USA	2014 Sept	5,000
	Polar Stratospheric Clouds	Zurich, Switzerland		4,000
	S-RIP	Camp Spring, MD, USA	2014 Sept	5,000
	WAVAS II satellite component	TBD	2014 Oct	4,000
	Temperature trends	TBD	TBD	4,000
	SSIRC SSG	Bern, Switzerland	2014 Sep	2,500
	Capacity Development	TBD	TBD	10,000
	SPARC SSG-22	Granada, Spain	late 2014	25,000
	Data Initiative Meeting	Kiel, GER or Reading, UK	October 2014	2,500
	SPARC IPO - WCRP contribution	Zurich, Switzerland		(20,000)
	SPARC IPO staff travel and individual travel			(3,000)
	subtotals			65,000 (66,100)

# Modelling and Observations FUNDING PRIORITIES – 2014

Modelling	meeting	location	date	support level allocated (used) (CHF)
<b>CORDEX</b>	CORDEX LAC-2	Santo Domingo, Dominican Republic	2014 April	(18,400)
	CORDEX SAT-1	Trieste, Italy	2014 May	(13,700)
	RCM 2014	Lund, Sweden	2014 June	(8,600)
<b>WGCM</b>	Pattern-scaling meeting	Boulder, USA	2014 April	(7,800)
	PMIP workshop (LoA)	Namur, Belgium	2014 May	(5,500)
	WGCM-18	Munich, Germany	2014 Oct	20,000
<b>WGNE</b>	WGNE-29 (with ARE)	Melbourne, Australia	2014 March	(11,100)
<b>WGSIP</b>	WGSIP-16	Exeter, UK	2014 March	(14,000)
<b>WMAC</b>	WMAC-3	Heidelberg, Germany	2014 July	(10,000)
<b>Other mtgs</b>	IPCC-AR5: lessons learnt for climate change research and WCRP	Bern, Switzerland	2014 Sept	15,000
<b>Observations</b>				
	obs4MIPS	Washington, DC, USA	2014 April	(3,300)
	WDAC-3	Galway, Ireland	2014 May	(10,200)
	Climate Symposium	Darmstadt, Germany	2014 Oct	25,000
<b>subtotals</b>				60,000 (102,600)



# Regional Climate FUNDING PRIORITIES – 2014

Regional Climate	meeting	location	date	support level allocated (used) (CHF)
	WGRC-2 and LAC Conference	Montevideo, Uruguay	2014 March	(27,800)
	3rd Int'l regional-scale workshop	Lund, Sweden	2014 June	(2,500)
	Asian-Oceania Geophysical Society	Sapporo, Japan	2014 July	5,000 (1,000)
	Expert Workshop on "distillation"	Europe (TBD)		50,000
	AGU fall meeting 2014	San Francisco, CA, USA		5,000
	Contingency (as opportunities arise)			10,000
subtotals				70,000 (31,300)

# Grand Challenges FUNDING PRIORITIES – 2014

	meeting	location	date	support level allocated (used) (CHF)
<b>Cryosphere</b>				
	ESM SnowMIP Writing Workshop	The Hague, Netherlands	2014 July	4,000
	Sea ice and Climate GC Workshop	London, UK	2014 Sept	5,000
	South America Glacier	Valdivia, Chile	2014 Oct	7,500
	Several meetings for polar matters including PCPI	Boulder, more TBD	2013-2015	Environment Canada Grant
	Arctic Freshwater Synthesis	TBD	TBD	7,000
<b>Sea Level</b>				
	Regional Sea-Level Grand Challenge Scoping Meeting	Paris, France	2014 May	25,000
<b>Clouds and circulation</b>				
	GC cloud and climate sensitivity meeting (LoA and TRV)	Rottach-Egern, Germany	2014 March	(23,000)
<b>Extremes</b>				
	ICTP/WCRP Summer School on Attribution and Prediction of Extreme Events	Trieste, Italy	2014 July	63,000
subtotals				111,500 (23,000)